

# Aerovox Corp.®

## Applications

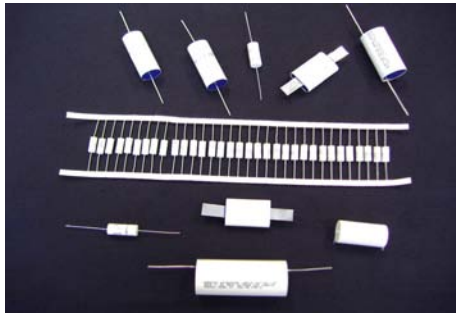
## Specifications



### AC Motor Run

- Wet & Dry Construction
- Metal and Plastic Cases
- Single and Dual Ratings

3.0 to 80.0  $\mu$ F  
240, 370, 440, 480, 660 Vac  
70°C; cULus, VDE  
Types M, Z, H and  
####-MF, -RMF



### Axial Wrap & Fill

- Round and Flat
- Polypropylene, Polyester
- Custom Designs
- Power Conversion
- High Current Applications

.001 to 20.0  $\mu$ F  
100, 250, 400, 600 Vdc  
Types AR, AF



### Defibrillator

- Bi-phasic, Mono-phasic
- Round & Oval Metal Cans
- Plastic Case & Customs

Up to 6000 Vdc  
Manufacturing Lot Traceability  
100% Pulse Tested  
Type Q



### Flash Lamp/Lasers

- High Pulse
- High Peak Currents
- Long Life
- Small Size

5.0 to 1600  $\mu$ F  
1000 to 5000 Vdc  
Up to 1.00E+08 cycles  
Types Z, Q



### HID Lighting

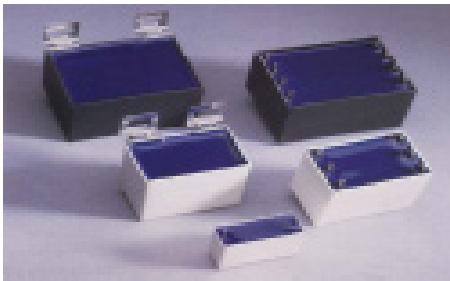
- Round & Oval Metal Can
- High Peak Current
- Wet & Dry Construction

240 to 525 Vac  
Single & Dual Capacitors  
100°C, 60K hr. duty @ 90°C  
Types Z, W, M, H and  
####-P, -PQ, -MF, -RMF

# Aerovox Corp.®

## Applications

## Specifications



### IGBT Snubber

- Many Terminal Options
- High Peak Current
- Low Inductance

.22 to 5.0  $\mu$ F  
630, 1000, 1250 & 1600 Vdc  
400 to 630 Vac  
Type RBPS



### Microwave

- Long Life Designs
- Commercial Applications
- Industrial Applications

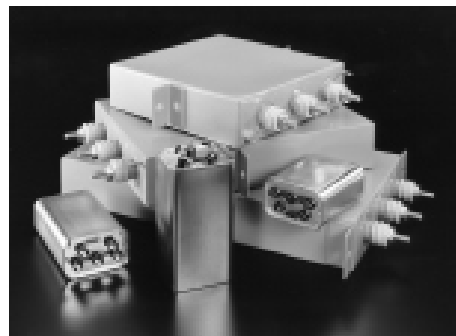
1.0 to 5.0  $\mu$ F  
600 to 2500 Vac  
Duals Ratings Available  
VDE  
Type N



### Power Electronics

- SCR Commutation
- Ferroresonant
- Input/Output Filtering

1.0 to 100.0  $\mu$ F  
240 to 1200 Vac  
Dual Ratings Available  
Types Z, Q, N, H



### Power Factor Correction

- Single-phase
- Three-phase
- High Harmonic Series

.5 to 200 KVAR  
240, 480, 600 Vac  
Medium Voltage Designs to  
4800 Vac  
Types AMP, MMP



### High Energy Discharge

- Pulse Power
- DC Link
- AC Designs
- Custom Designs

10 to 10,000  $\mu$ F  
500 to 60,000 Vdc  
To 1.00E+08 Pulse Life  
Types Q, Z